



2012 GROVE GMK-5275 / 5220-2388

Prepared for:
LOCKE CRANE SERVICES




P.O. Box 246
Chester, NH 03036

on

4/30/2023

Overview

Breakdown by Form

Form Type	 High	 Med	 Low	# Forms
Inspection	0	0	0	1
Local Acknowledgment Of Unit Examination	0	0	0	1
Overall:	0	0	0	2

Breakdown by Location

Location	 High	 Med	 Low	# Forms
Tewksbury, MA	0	0	0	2
Overall:	0	0	0	2

Breakdown by Asset

Asset Type	 High	 Med	 Low	# Assets
Telescoping Boom Crane	0	0	0	1
Overall:	0	0	0	1

Marquis Crane Service disclaims all warranties, both express and implied, relating to the information, reports, opinions and analysis disclosed to the Customer by Marquis Crane Service. Marquis Crane Service shall not be liable for any errors or omissions, or any losses, injury or damages arising from the use of such information, reports, opinions and analysis by the Customer.



Inspection
LOCKE CRANE SERVICES
P.O. Box 246
Chester, NH 03036

FolderID: AI6266
FormID: 16661596



Telescoping Boom Crane
Completed by: Steven Marquis on 04/30/2023

Location: Tewksbury, MA

Serial #: 5220-2388

TagID: 18

Status: In Service

Description: 2012 GROVE GMK-5275 / 5220-2388

Manufacturer: Grove

Model: GMK-5275

Capacity: see OEM capacity chart

Length/Lift: 43 - 223 ft

Hook Type: Load Block & Hook

Hours and Miles

1. Hours	07,632. upper engine
2. Miles	127784.

Historical Records

3. Monthly Inspection	(SAT) Satisfactory
4. Record of Maintenance	(SAT) Satisfactory
5. Documentation of Annual / Comprehensive Inspection	(SAT) Satisfactory
6. Equipment Modification(s) or additions	(NA) Not Applicable
7. Record of Load Test	(SAT) Satisfactory

General

8. External Lights	(SAT) Satisfactory
9. Housekeeping	(SAT) Satisfactory
10. Safety and Warning Labels	(SAT) Satisfactory
11. Hand Signal Chart	(SAT) Satisfactory

Driver's Cab and Station

12. Service Brake	(SAT) Satisfactory
13. Emergency Brake	(SAT) Satisfactory
14. Parking Brake	(SAT) Satisfactory
15. External Lights (Headlights, Taillights, Brake Lights)	(SAT) Satisfactory
16. Audible Warning Device	(SAT) Satisfactory
17. Audible Reverse Signal Alarm	(SAT) Satisfactory
18. Windows / Mirrors	(SAT) Satisfactory
19. Windshield Wipers	(SAT) Satisfactory

Marquis Crane Service disclaims all warranties, both express and implied, relating to the information, reports, opinions and analysis disclosed to the Customer by Marquis Crane Service. Marquis Crane Service shall not be liable for any errors or omissions, or any losses, injury or damages arising from the use of such information, reports, opinions and analysis by the Customer.

● 20. Windshield Defroster	(SAT) Satisfactory
● 21. Seatbelts	(SAT) Satisfactory
● 22. Tires	(SAT) Satisfactory
● 23. Seat	(SAT) Satisfactory
● 24. Steering	(SAT) Satisfactory
● 25. Housekeeping	(SAT) Satisfactory
● 26. Fire Extinguisher	(SAT) Satisfactory
Lower Carrier Power Plant	
● 27. Engine Performance	(SAT) Satisfactory
● 28. Exhaust System	(SAT) Satisfactory
● 29. Belts	(SAT) Satisfactory
● 30. Rotating and Reciprocating Parts	(SAT) Satisfactory
Carrier	
● 31. Transmission	(SAT) Satisfactory
● 32. Drive Line	(SAT) Satisfactory
● 33. Tires	(SAT) Satisfactory
● 34. Tire Air Pressure	(SAT) Satisfactory
● 35. Main Frame Members	(SAT) Satisfactory
● 36. Hydraulic Hoses, Fittings, Tubes	(SAT) Satisfactory
● 37. Hydraulic Fluid Level	(SAT) Satisfactory
● 38. Hoses / Tubing / Fittings .	(SAT) Satisfactory
● 39. Slip Resistant Walking surface	(SAT) Satisfactory
● 40. Axle Lockout	(SAT) Satisfactory
● 41. Audible Reverse Signal Alarm	(SAT) Satisfactory
Outriggers	
● 42. Boxes & Beams	(SAT) Satisfactory
● 43. Hydraulic Cylinders	(SAT) Satisfactory
● 44. Pad / Float	(SAT) Satisfactory
● 45. Hoses / Tubing / Fittings	(SAT) Satisfactory
● 46. Holding Valves	(SAT) Satisfactory
● 47. Caution / Warning Signs	(SAT) Satisfactory
Operator's Station	
● 48. Windows	(SAT) Satisfactory
● 49. Windshield Wipers	(SAT) Satisfactory
● 50. Cab Door Restraint	(SAT) Satisfactory
● 51. Cab Access	(SAT) Satisfactory
● 52. Steps / Ladders / Handrails	(SAT) Satisfactory
● 53. Anti-Skid Stepping Surfaces	(SAT) Satisfactory
● 54. Load Chart	(SAT) Satisfactory
● 55. Fire Extinguisher	(SAT) Satisfactory
● 56. Operator's Manual	(SAT) Satisfactory
● 57. Seat	(SAT) Satisfactory
● 58. Seatbelts	(NA) Not Applicable
● 59. Electrocutation Warning Sign(s)	(SAT) Satisfactory
● 60. Level	(SAT) Satisfactory
● 61. Horn	(SAT) Satisfactory
● 62. Load Indicator	(SAT) Satisfactory

Marquis Crane Service disclaims all warranties, both express and implied, relating to the information, reports, opinions and analysis disclosed to the Customer by Marquis Crane Service. Marquis Crane Service shall not be liable for any errors or omissions, or any losses, injury or damages arising from the use of such information, reports, opinions and analysis by the Customer.

● 63. Controls Identified	(SAT) Satisfactory
● 64. Control Mechanisms	(SAT) Satisfactory
● 65. Power Plant Controls	(SAT) Satisfactory
● 66. Brake and Clutch	(NA) Not Applicable
● 67. Travel Brakes	(NA) Not Applicable
● 68. Travel Controls	(NA) Not Applicable
● 69. Travel Mechanism	(NA) Not Applicable
● 70. Travel Locks	(NA) Not Applicable
Load Chart	
● 71. Ground Level, Remotely Controlled	(NA) Not Applicable
● 72. Per Configuration	(SAT) Satisfactory
● 73. Visible from Fixed Operator's Station	(SAT) Satisfactory
● 74. Durable / Legible/ Secured	(SAT) Satisfactory
Safety Devices / Operational Aids	
● 75. Boom Angle Indicator	(SAT) Satisfactory
● 76. Boom Length Indicator	(SAT) Satisfactory
● 77. Main Drum Rotation Indicator	(SAT) Satisfactory
● 78. Auxiliary Drum Rotation Indicator	(NA) Not Applicable
● 79. Load Moment Indicator	(SAT) Satisfactory
● 80. Load Weight Indicator	(SAT) Satisfactory
● 81. Radius Indicator	(SAT) Satisfactory
● 82. Level Indicator	(SAT) Satisfactory
● 83. Barge List & Trim Indicator	(NA) Not Applicable
● 84. If Barge Mounted, Is The Crane Secured To The Barge	(NA) Not Applicable
● 85. Two-Block System	(SAT) Satisfactory
● 86. Overload Prevention Device	(SAT) Satisfactory
Upper Power Plant	
● 87. Performance	(SAT) Satisfactory
● 88. Exhaust System/Guards & Insulators	(SAT) Satisfactory
● 89. Hoses	(SAT) Satisfactory
● 90. Reciprocating and rotating parts	(SAT) Satisfactory
Rotating Upper Structure	
● 91. Turntable / Bearing	(SAT) Satisfactory
● 92. Turntable / Rollers	(NA) Not Applicable
● 93. Counterweight Frame	(SAT) Satisfactory
● 94. Ring and Pinion Gear	(SAT) Satisfactory
● 95. Hydraulic and Pneumatic Pumps	(SAT) Satisfactory
● 96. Hydraulic Tubes, Fitting, and Hoses	(SAT) Satisfactory
● 97. Hydraulic Pressure	(SAT) Satisfactory
● 98. Electrical Wiring	(SAT) Satisfactory
● 99. Main Hoist - Brakes and Clutch System	(SAT) Satisfactory
● 100. Main Hoist - Wire Rope Reeving	(SAT) Satisfactory
● 101. Main Hoist - Meets 2 rope wrap minimum	(SAT) Satisfactory
● 102. Auxiliary Hoist - Brakes and Clutch System	(NA) Not Applicable
● 103. Auxiliary Hoist - Wire Rope Reeving	(NA) Not Applicable
● 104. Auxiliary Hoist - Meets 2 rope wrap minimum	(NA) Not Applicable
● 105. Swing System / Assembly	(SAT) Satisfactory

Marquis Crane Service disclaims all warranties, both express and implied, relating to the information, reports, opinions and analysis disclosed to the Customer by Marquis Crane Service. Marquis Crane Service shall not be liable for any errors or omissions, or any losses, injury or damages arising from the use of such information, reports, opinions and analysis by the Customer.

● 106. Counterweight Mounting	(SAT) Satisfactory
● 107. Counterweight Posted Warnings	(SAT) Satisfactory
● 108. Electrocution Posted Warnings	(SAT) Satisfactory
Main Boom	
● 114. Lift Cylinder(s)	(SAT) Satisfactory
● 115. Telescoping Boom Cylinder(s)	(SAT) Satisfactory
● 116. Hydraulic Hoses, Tubes, and Fittings	(SAT) Satisfactory
● 117. Holding Device	(SAT) Satisfactory
● 118. Boom Sections Alignment	(SAT) Satisfactory
● 119. Wear Pads	(SAT) Satisfactory
● 120. Sheaves	(SAT) Satisfactory
● 121. Hoist Line Dead End	(SAT) Satisfactory
● 122. Boom Hinge Pin	(SAT) Satisfactory
● 123. Boom Head Section	(SAT) Satisfactory
● 124. Auxiliary Boom Head	(NA) Not Applicable
● 125. Structure	(SAT) Satisfactory
Main Drum Wire Rope	
● 134. Rope Damage	(SAT) Satisfactory
● 135. Diameter and wear	
Size	Actual diameter measurement
7/8 / 22 mm	0.898 / 22.81 mm
● 136. Lubrication	(SAT) Satisfactory
● 137. End Connectors	(SAT) Satisfactory
Luffing Boom	
● 138. Luffing Jib Section Identification	(SAT) Satisfactory
● 139. Luffing Jib Section Sequence	(SAT) Satisfactory
● 140. Luffing Jib Tip Section	(SAT) Satisfactory
● 141. Luffing jib Warning Decals	(SAT) Satisfactory
● 142. Luffing Jib Point Sheaves	(SAT) Satisfactory
● 143. Luffing Hoist Line Dead End	(SAT) Satisfactory
● 144. Wire Rope Retainers	(SAT) Satisfactory
● 145. Luffing Jib Foot Keepers and Pins	(SAT) Satisfactory
● 146. Lattice Members	(SAT) Satisfactory
● 147. Cord Members	(SAT) Satisfactory
● 148. End Connections and Pins	(SAT) Satisfactory
● 149. Luffing Jib Angle Indicator	(SAT) Satisfactory
● 150. Guard Rails	(NA) Not Applicable
● 151. Luffing Jib Stops	(SAT) Satisfactory
■ hydraulic cylinder	
● 152. Walking Surfaces	(NA) Not Applicable
● 153. Luffing Jib Hoist Reeving	(NA) Not Applicable
Load Block & Hook	
● 159. Capacity Marking	(SAT) Satisfactory

Marquis Crane Service disclaims all warranties, both express and implied, relating to the information, reports, opinions and analysis disclosed to the Customer by Marquis Crane Service. Marquis Crane Service shall not be liable for any errors or omissions, or any losses, injury or damages arising from the use of such information, reports, opinions and analysis by the Customer.



● 160. Weight Marking	(SAT) Satisfactory
● 161. Sheave(s)	(SAT) Satisfactory
● 162. Safety Latch(es)	(SAT) Satisfactory
● 163. 0° Hook Bend or Twist	(SAT) Satisfactory
● 164. 5% Hook Opening or 1/4" Max	(SAT) Satisfactory
● 165. 10% Hook Wear Max	(SAT) Satisfactory
● 166. Bearing	(SAT) Satisfactory
● 167. Wedge Socket / End Fitting	(SAT) Satisfactory
● 168. Reeving	(SAT) Satisfactory

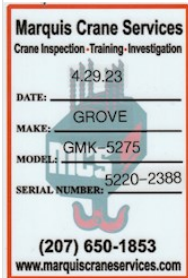
No-Load Operational Test

● 177. No-Load Operational Test	(SAT) Satisfactory
---------------------------------	--------------------

Verification and Completion

● 178. Inspector Name and Signature	Steve Marquis
-------------------------------------	---------------

● 179. Date of Inspection	04/29/2023
● 180. Customer Name and Signature	LOCKE CRANE SERVICE
● 181. Certificate Issued	(Y) Yes



Marquis Crane Service disclaims all warranties, both express and implied, relating to the information, reports, opinions and analysis disclosed to the Customer by Marquis Crane Service. Marquis Crane Service shall not be liable for any errors or omissions, or any losses, injury or damages arising from the use of such information, reports, opinions and analysis by the Customer.



Local Acknowledgment Of Unit Examination

LOCKE CRANE SERVICES

P.O. Box 246
Chester, NH 03036

FolderID: AI6266
FormID: 16661597



Telescoping Boom Crane

Completed by: Steven Marquis on 04/30/2023

Location: Tewksbury, MA

Serial #: 5220-2388

TagID: 18

Status: In Service

Description: 2012 GROVE GMK-5275 / 5220-2388

Manufacturer: Grove

Model: GMK-5275

Capacity: see OEM capacity chart

Length/Lift: 43 - 223 ft

Hook Type: Load Block & Hook

Local Acknowledgment Of Unit Examination

1. OWNERS IDENTIFICATION	18
2. OWNER/EMPLOYER	LOCKE CRANE SERVICE
3. OWNERS ADDRESS	P.O. Box 246 - Chester, NH 03036
4. TYPE OF DEVICE	CRANE
5. CRANE LOCATION/ADDRESS	860 East St. - Tewksbury, MA
6. DOES UNIT CHANGE WORKSITES?	(Y) YES
7. HOUR METER	07632
7,632. upper engine	
8. MANUFACTURER	GROVE
9. MODEL	GMK-5275
10. SERIAL NUMBER	5220-2388
11. DESCRIPTION OF DEVICE	hydraulic boom - all terrain
12. MAXIMUM CAPACITY	see OEM load capacity chart for configuration
13. SERVICE STATUS	HOOK WORK
14. BOOM LENGTH & TYPE	43 - 223 ft / telescopic full power - pin & latch
15. LUFFING JIB LENGTH & TYPE	39 - 68 ft / SAW bi-fold lattice
stored @ shop	
16. FIXED JIB LENGTH & TYPE	
17. TOWER HEIGHT & TYPE	

Marquis Crane Service disclaims all warranties, both express and implied, relating to the information, reports, opinions and analysis disclosed to the Customer by Marquis Crane Service. Marquis Crane Service shall not be liable for any errors or omissions, or any losses, injury or damages arising from the use of such information, reports, opinions and analysis by the Customer.

18. PROOF LOAD TEST APPLIED 1.1

BOOM LENGTH	BOOM ANGLE	RADIUS
89.3 ft	47.7	53.4 ft



19. PROOF LOAD TEST APPLIED 1.2

RATED LOAD	PROOF LOAD	% OF RATED LOAD
24,800 @ 50 ft	23,400 lbs	100

20. PROOF LOAD TEST APPLIED 1.3

HOIST USED	BOOM DIRECTION	LOAD CHART NUMBER
main	over side	LMI code

21. DESCRIPTION OF PROOF LOAD crane counter-weight

22. BASIS FOR ASSIGNED LOAD RATINGS OEM designed rating

23. REMARKS AND/OR LIMITATIONS IMPOSED

24. I certify that on this date, the above device was examined & tested by the undersigned or authorized representative who in their opinion, said the unit complied with the standards or requirements of OSHA: 1926.1400 and ASME B30.5 04/29/2023

25. SIGNATURE OF AUTHORIZED PERSON Steve Marquis